



PT  
Ranch

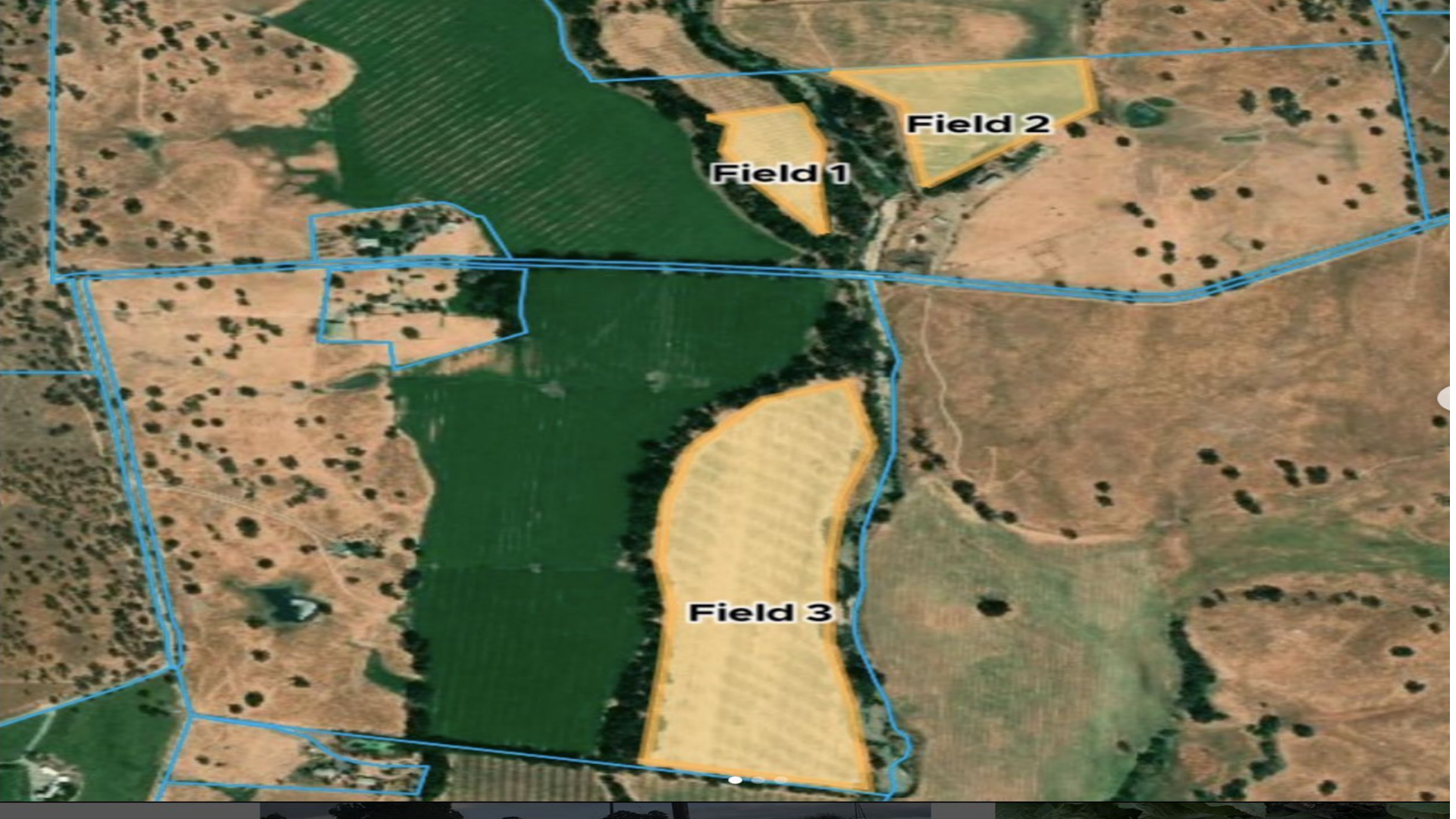


~~SUSTAIN~~  
REGENERATE



# Six Principles of Regenerative Agriculture





**Field 1**

**Field 2**

**Field 3**

DEGENERATIVE\*



BARE SOIL



REGENERATIVE\*



COVER CROPS

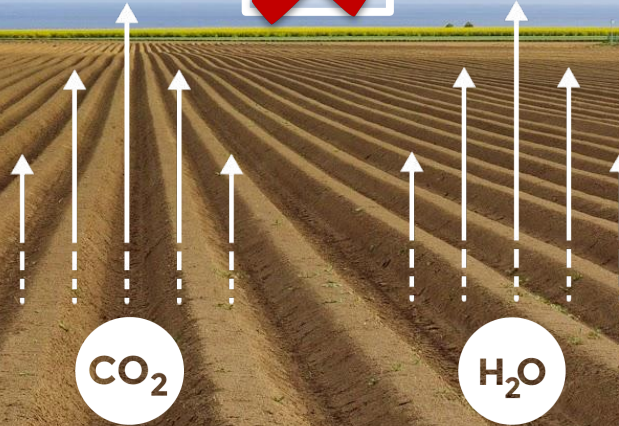








DEGENERATIVE\*



**TILLING**

REGENERATIVE\*



CO<sub>2</sub>

H<sub>2</sub>O

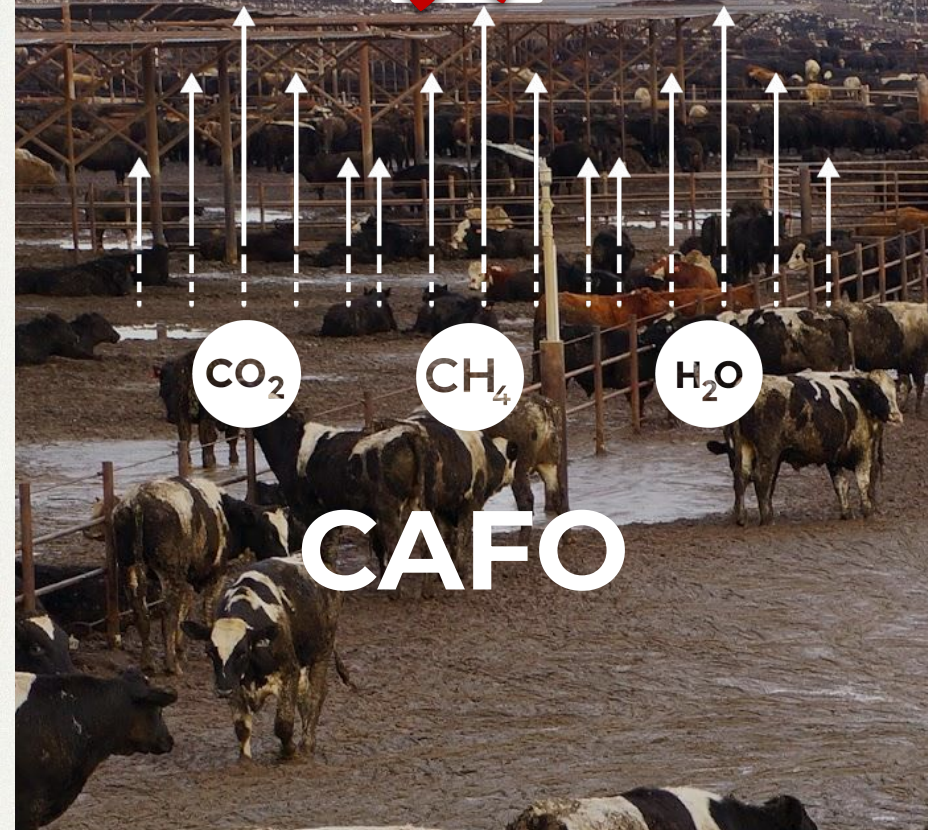


**NO-TILL**





DEGENERATIVE\*



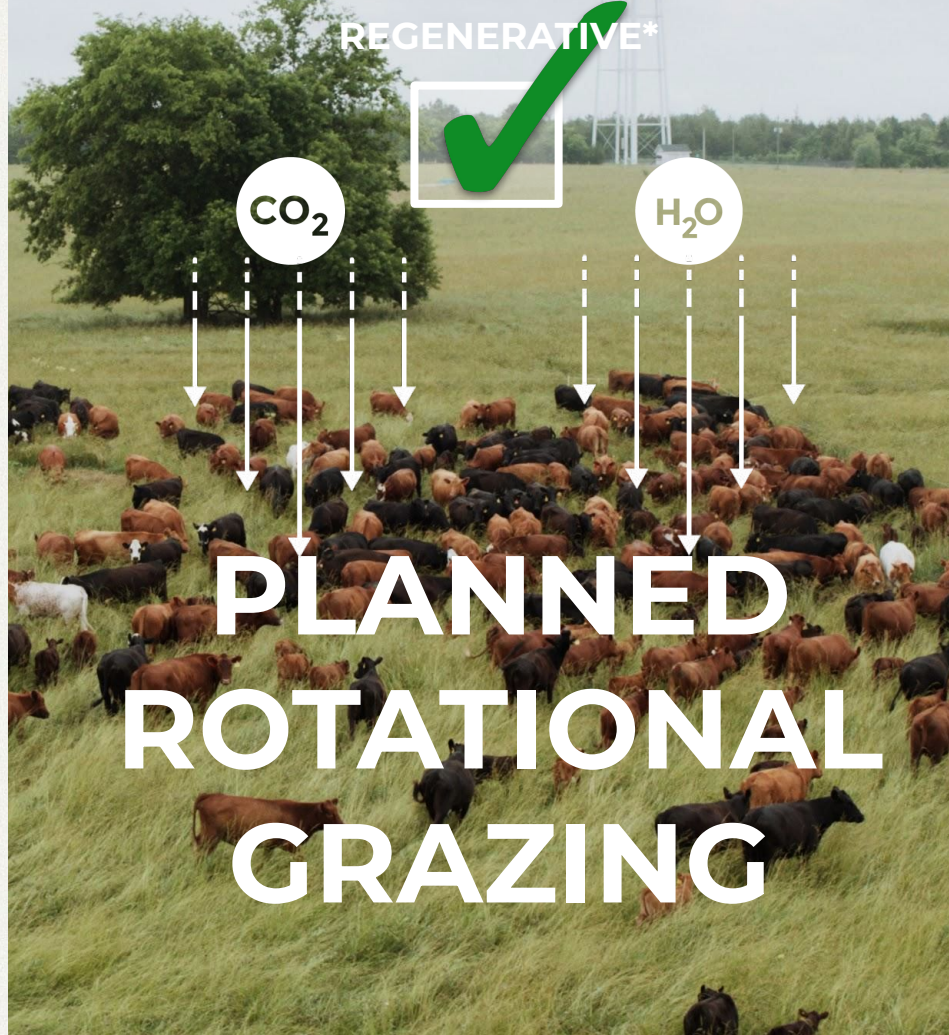
CO<sub>2</sub>

CH<sub>4</sub>

H<sub>2</sub>O

CAFO

REGENERATIVE\*



CO<sub>2</sub>

H<sub>2</sub>O

PLANNED  
ROTATIONAL  
GRAZING

















DEGENERATIVE\*



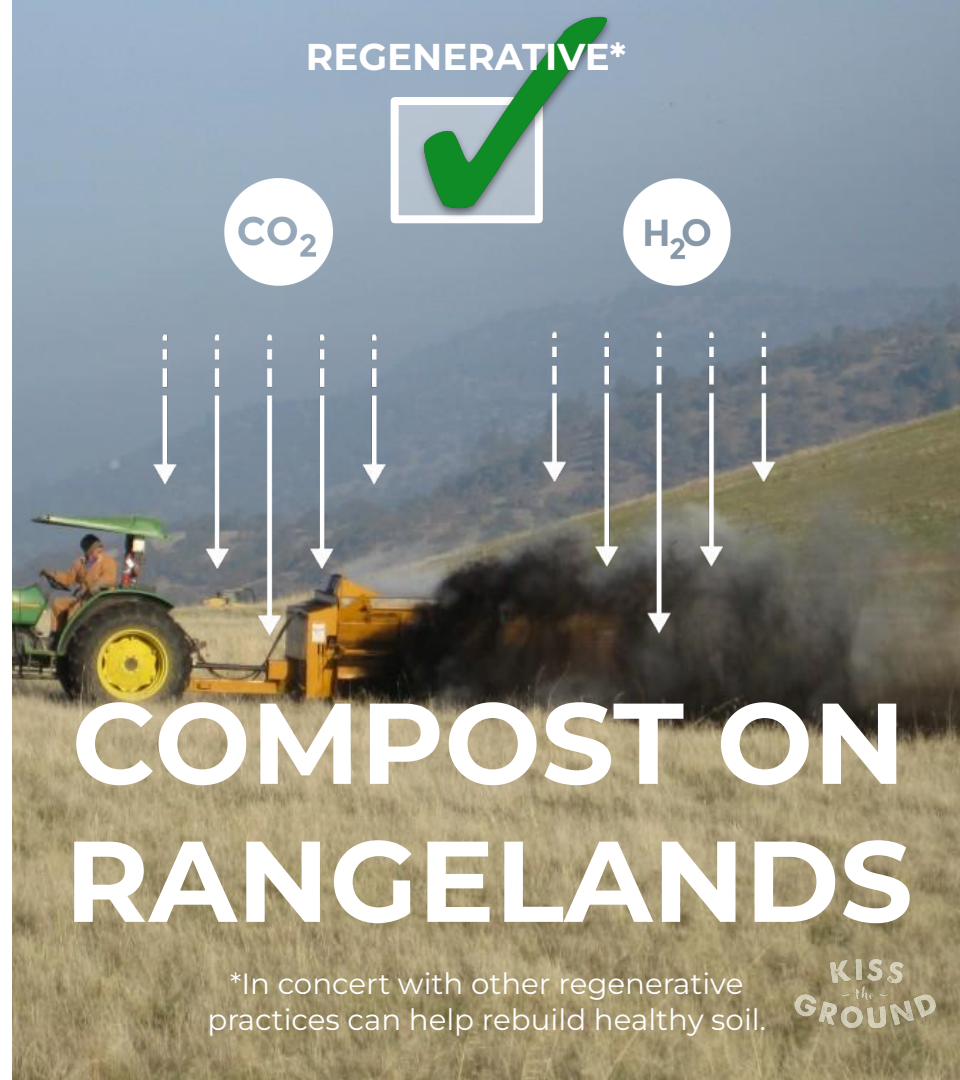
CO<sub>2</sub>

CH<sub>4</sub>

H<sub>2</sub>O

# ORGANICS IN LANDFILLS

REGENERATIVE\*



CO<sub>2</sub>

H<sub>2</sub>O

# COMPOST ON RANGELANDS

\*In concert with other regenerative practices can help rebuild healthy soil.

KISS  
-the-  
GROUND



REGENERATIVE\*



CO<sub>2</sub>

H<sub>2</sub>O

# SILVOPASTURE

\*In concert with other regenerative practices can help rebuild healthy soil.

KISS  
-the-  
GROUND

















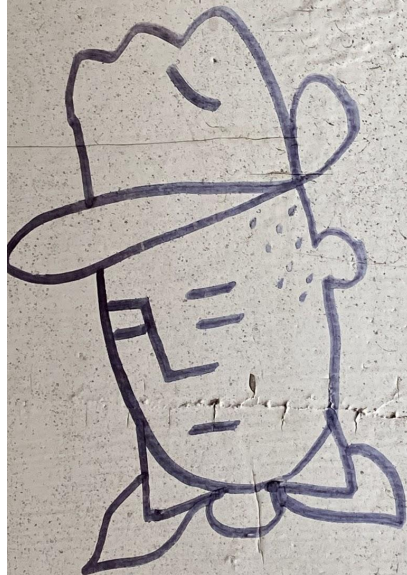
**ECOLOGICAL  
OUTCOME  
VERIFICATION™**



@pt.ranch



that's a tree



TRY  
FAIL  
TRY